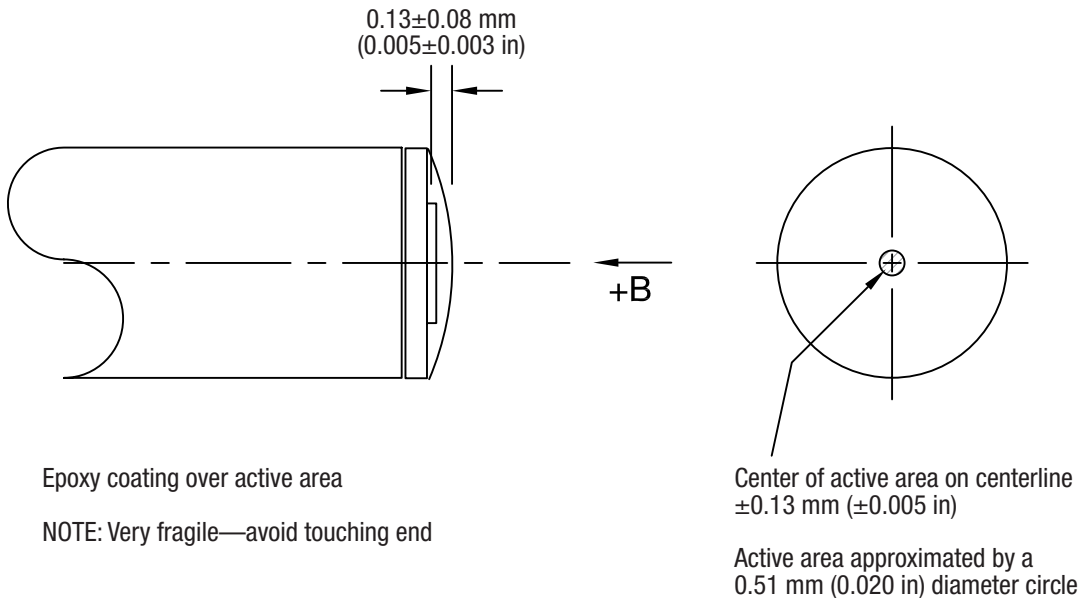


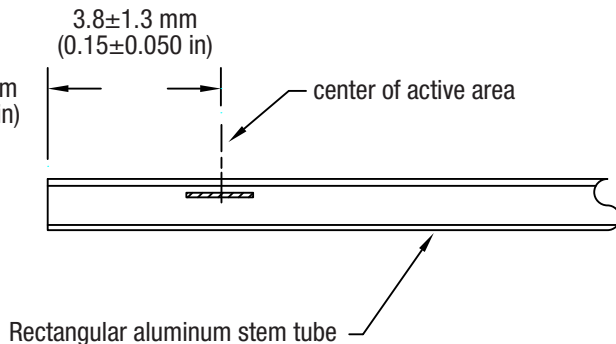
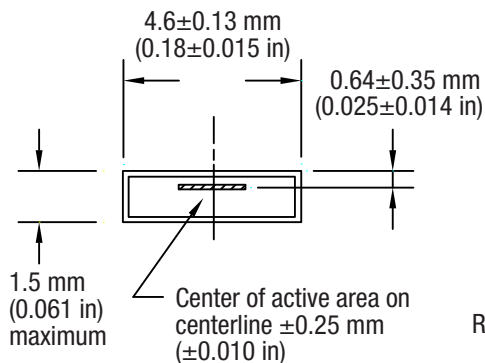
Active area approximated by a  
1.0 mm (0.040 in) diameter circle

**Active area: MNT/HMNT-4EXX**

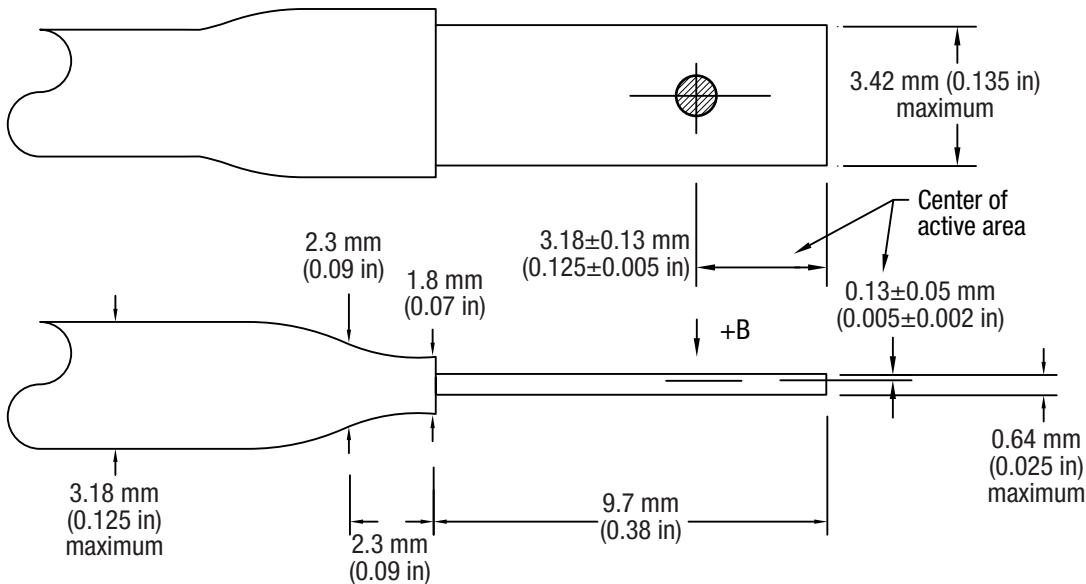


**Active area: MNA/HMNA-19XX**

↓ +B

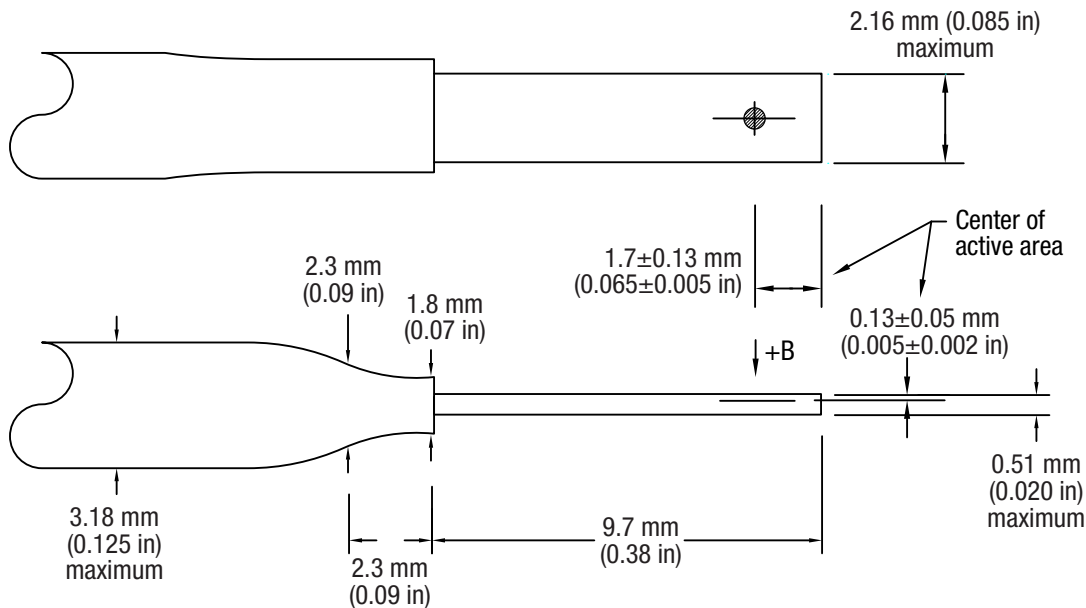


**Active area: MMT/HMMT-6JXX**

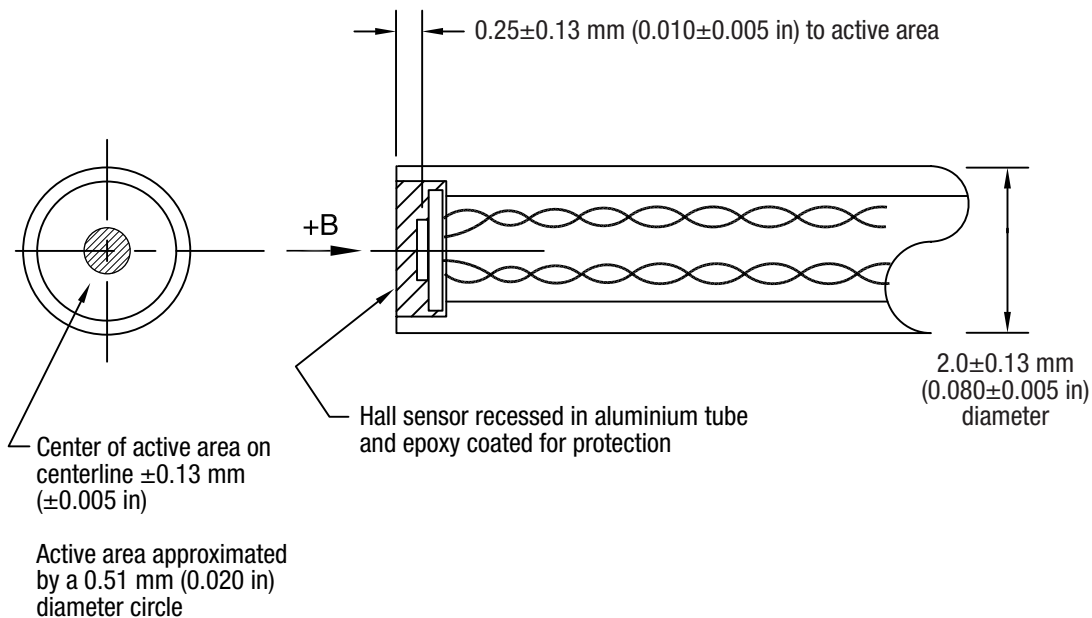


Active area approximated by a  
1.0 mm (0.040 in) diameter circle

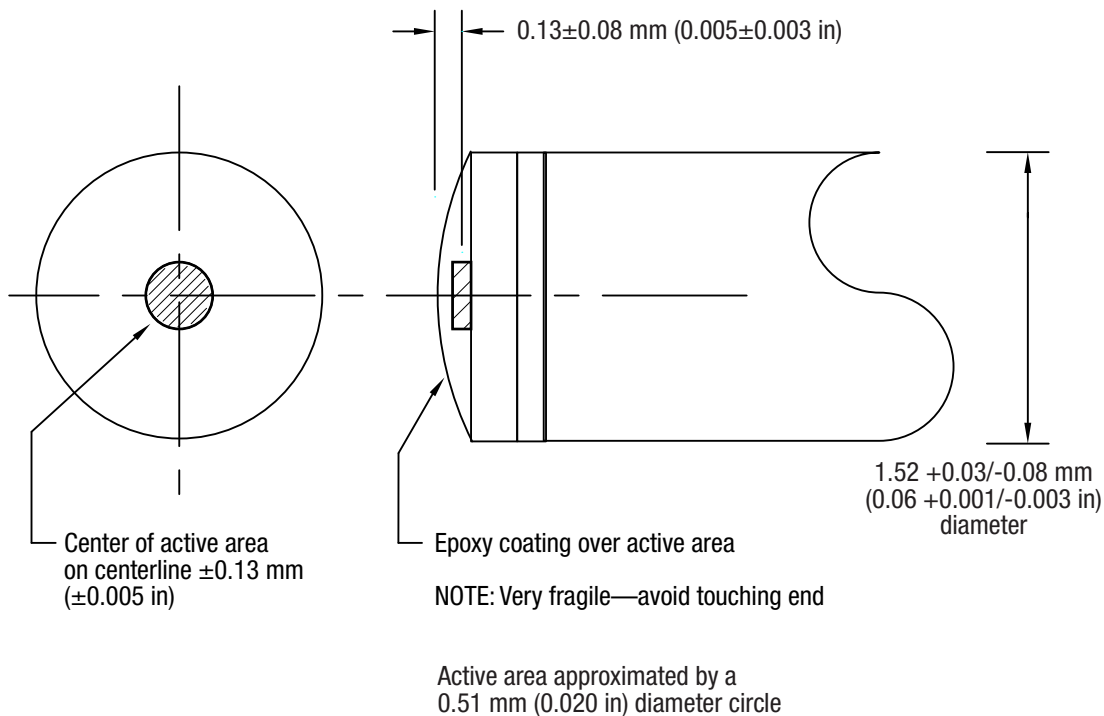
**Active area: MFT/HMFT-3E03**



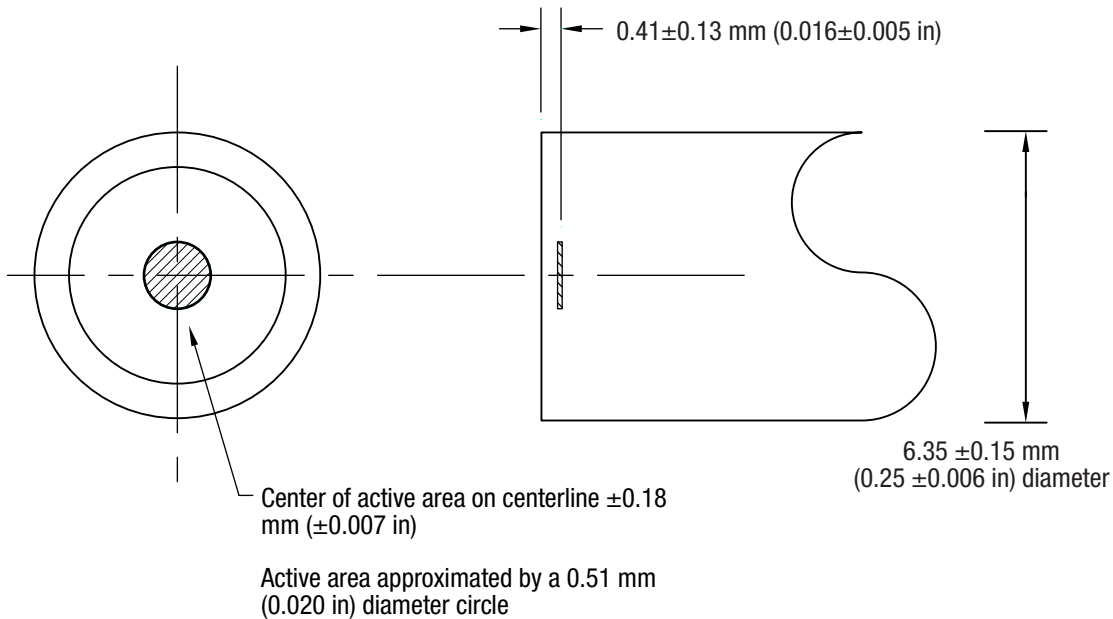
**Active area: MFT/HMFT-2903**



**Active area: MMA/HMMA-08XX**

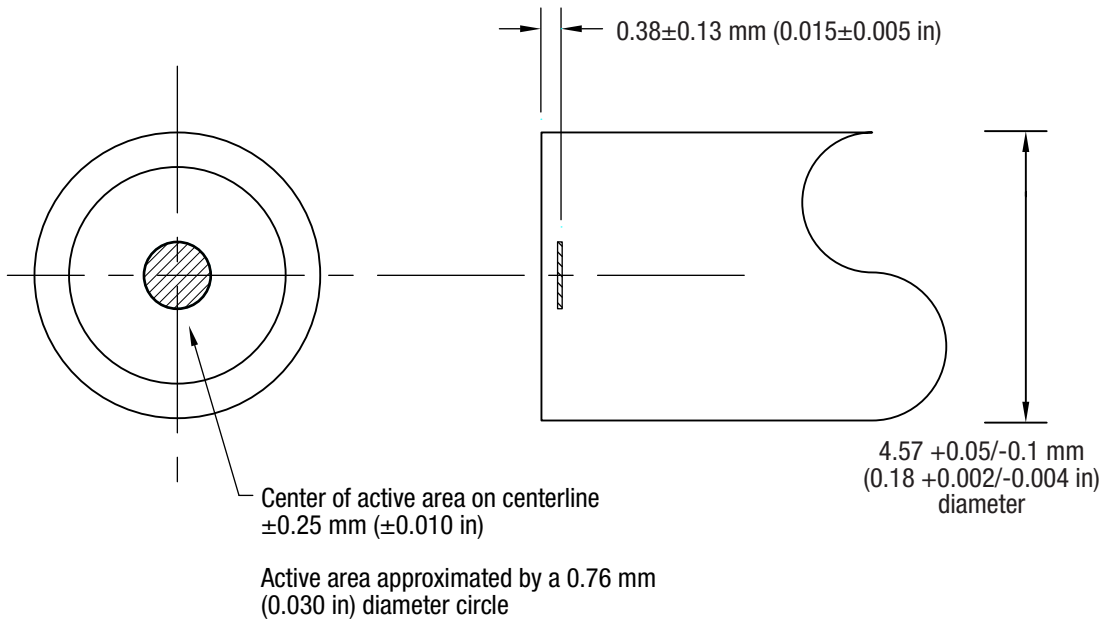


**Active area: MMA/HMMA-06XX**

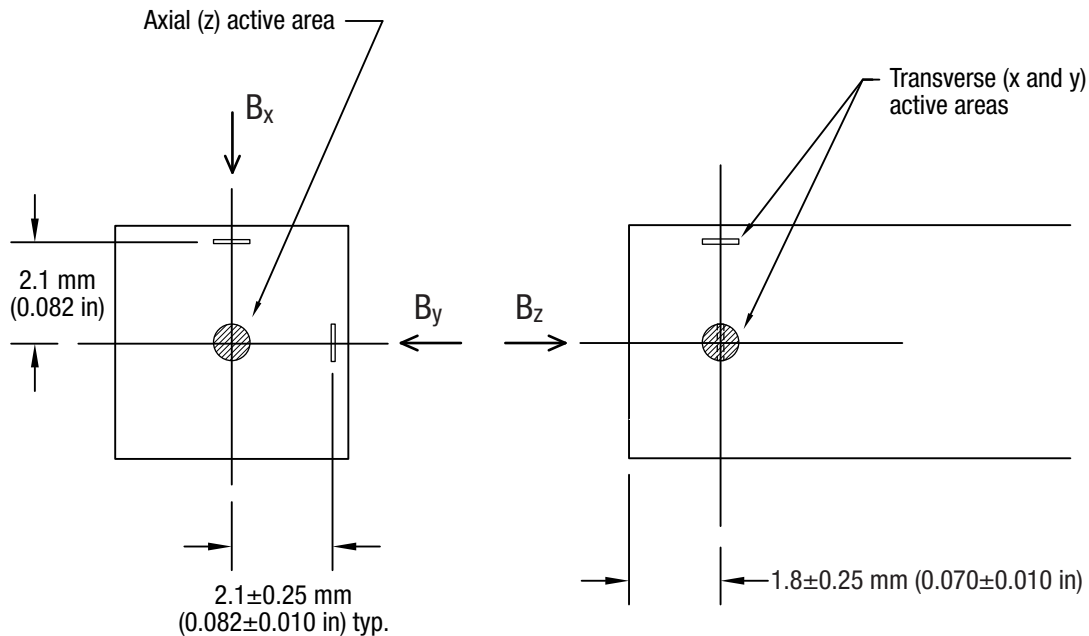


**Active area: MMA/HMMA-25XX**



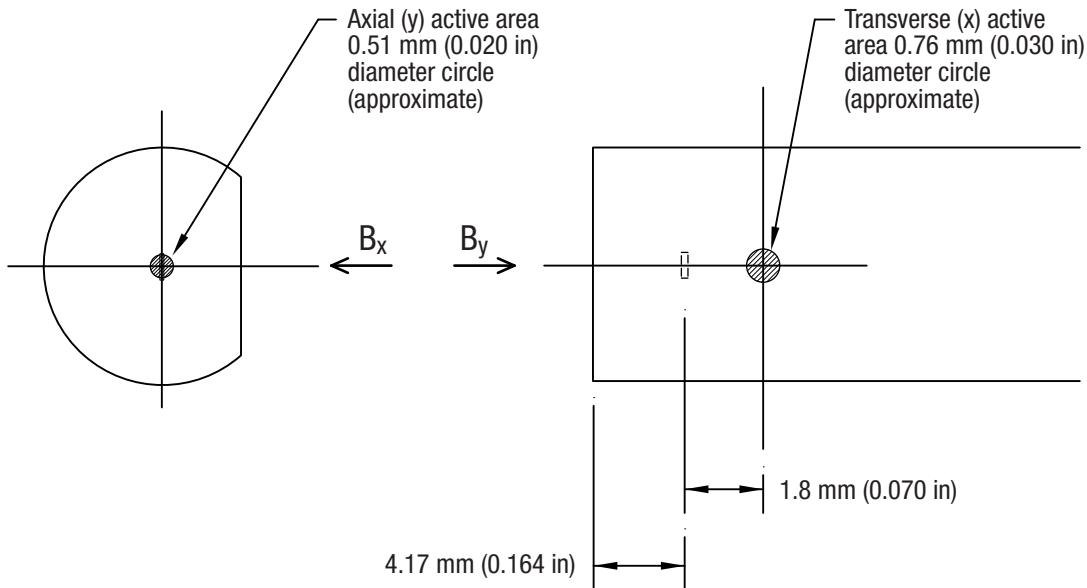


**Active area: MMA/HMMA-18XX**

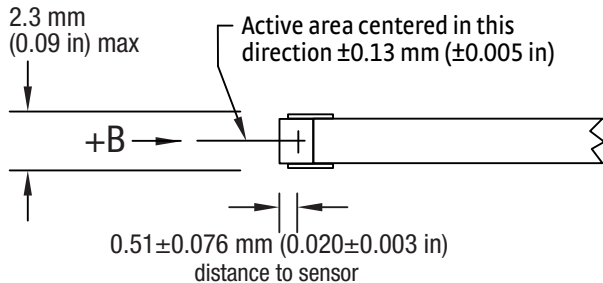
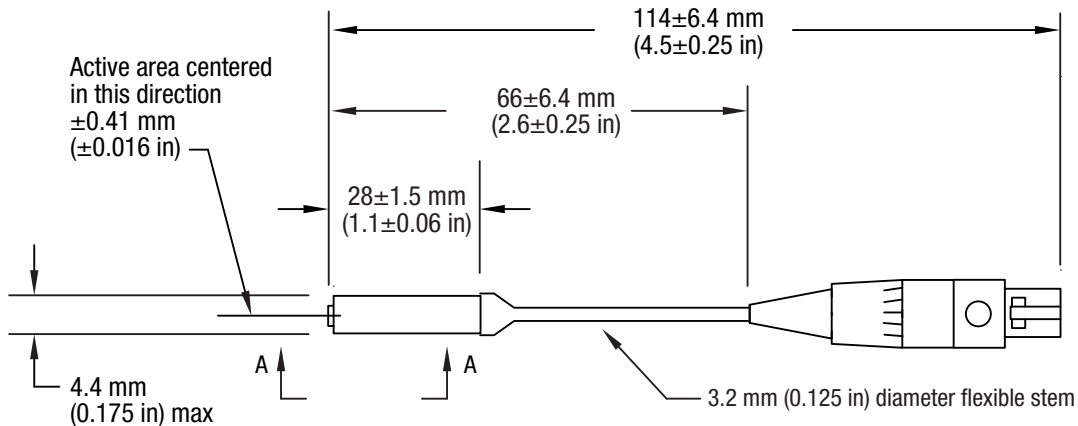


NOTE: All active areas are approximated by a  $0.76 \text{ mm}$  ( $0.030 \text{ in}$ ) diameter circle

**Active area: 3-axis**

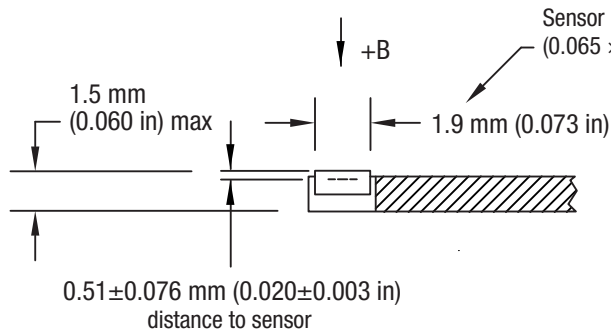
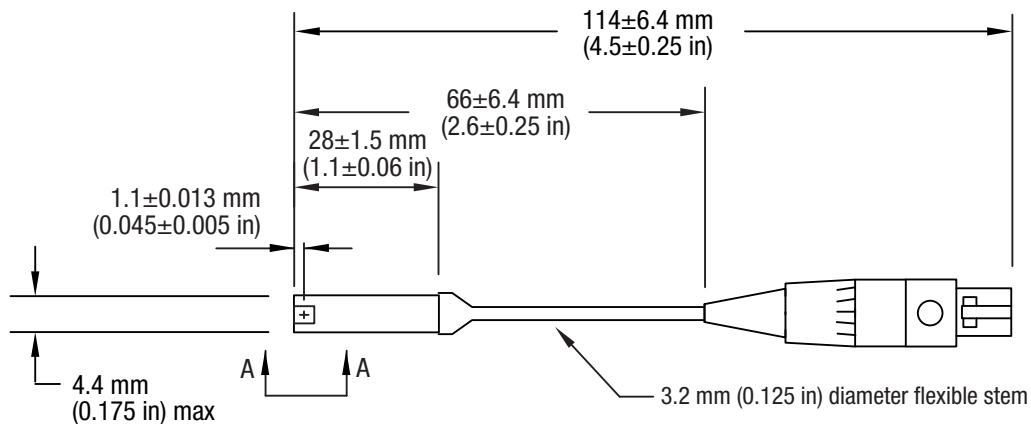


**Active area: 2-axis**



NOTE: Active area of sensor is approximately a 0.13 mm (0.005 in) diameter circle

**Active area: MSA-410**



NOTE: Active area of sensor is approximately a  $0.13$  mm ( $0.005$  in) diameter circle

**Active area: MST-410**